

gsu

ELECTIONS

STUDENT GROUP ELECTIONS

2024

KEY INFO AND FAQs



greenwich
students'
union

The
Hub

GENERAL INFORMATION

What are the GSU Elections?

GSU is student led. That is at the heart of everything we do. We are also a democratic organisation. Therefore throughout the year we run elections so students become our future leaders.

We run elections through the year for our volunteers and leaders. Elections are currently open for Programme Representatives, School Networking Officers and NUS Delegates.

Each September we run our Programme Representative, Liberation Officer and NUS delegate elections. From December to February GSU holds elections for our Officer roles and in the Spring we run elections for our Student Group Leaders.

During your time at University, GSU is here to ensure that you have the opportunity and space to have your feedback heard and acted upon, alongside having the chance to represent your own views alongside the views of your peers.

What is a By-Election?

By-elections occur when not all posts are filled during an election. This could be due to lack of nominations, lack of votes, or votes to re-open nominations during the election cycle. Our Student Group By-elections offer a second chance for students to run for a vacant position on a committee.

The process is exactly the same for both elections and mapped out below



Find out more:

Nominate and Vote on our Election Pages at greenwichsu.co.uk or thehubmedway.co.uk

Contact the team for questions or support at: elections@gre.ac.uk

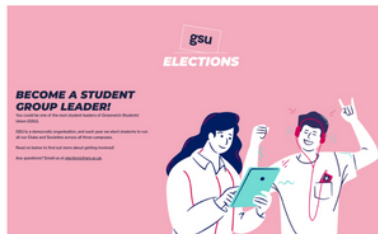
How To Nominate

Nomination means putting yourself forward or standing for a role.

If you are a Greenwich Student,
Follow the Left Hand Side

STEP 1.

Head to
greenwichsu.co.uk/elections



STEP 1.

Head to
greenwichsu.co.uk/elections



STEP 2.

Login with your University
details



If you are a Medway Student,
Follow the right hand side

STEP 1.

Head to
[thehubmedway.co.uk/groups/
/studentgroupelections/](https://thehubmedway.co.uk/groups/studentgroupelections/)



STEP 1.

Head to
[thehubmedway.co.uk/groups/
studentgroupelections/](https://thehubmedway.co.uk/groups/studentgroupelections/)



STEP 2.

Login with your University
details



How To Nominate

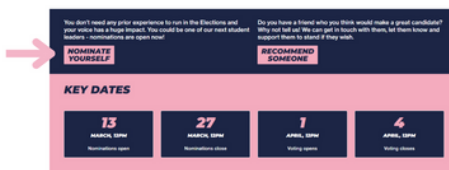
Nomination means putting yourself forward or standing for a role.

If you are a Greenwich Student, Follow the Left Hand Side

If you are a Medway Student, Follow the right hand side

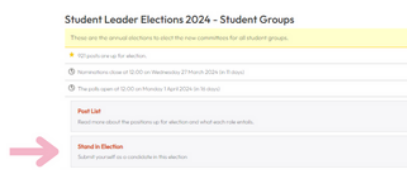
STEP 3.

click 'Nominate Yourself'



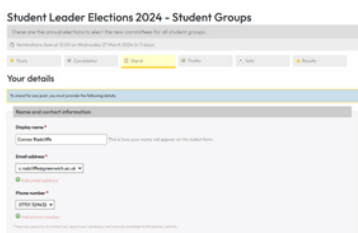
STEP 3.

click 'stand in election'



STEP 4.

Ensure your details are correct and press save at the bottom of the page



STEP 5.

Find the post you want to nominate for. Select 'stand'

STEP 6.

Submit your nomination

Optional: upload a manifesto saying why others should vote for you

STEP 7.

Well Done! You have now nominated yourself.

Nominations will be approved once the nomination period has closed, and before voting opens.

How To Vote

After you have nominated, you will need to be voted into the role. Once voting opens, head back to the elections page and log in.

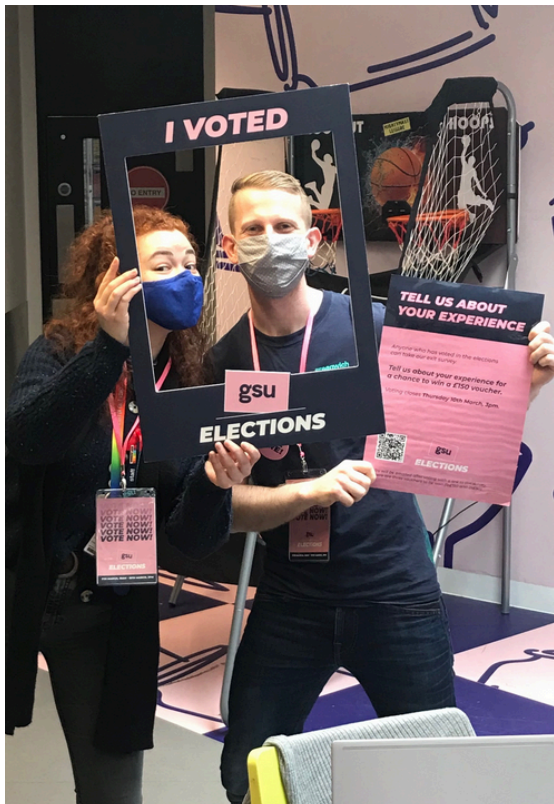
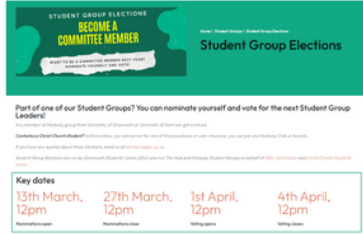
Greenwich Students

STEP 1.
Head to
greenwichsu.co.uk/elections



Medway Students

STEP 1.
Head to
thehubmedway.co.uk/groups/studentgroupelections/



Top Tips

If you are running in the election you can vote for yourself.

Get as many of your friends, course mates and other students to vote for you before the voting period closes.

GSU runs elections via Single Transferable Vote. This means voters will be able to rank candidates in order of preference. So when campaigning remember to tell people to vote you as their number 1 choice.

THE RULES

Greenwich Students' Union (GSU) elections aim to be free, fair, and accessible to everyone. It is the responsibility of Greenwich Students' Union to ensure the smooth running of the elections. This document outlines the rules, guidelines, and processes to make that happen.

The Election Rules are held and owned by the Greenwich Students' Union Team at GSU and may be reviewed in reflection of changing circumstances throughout the Election. Every candidate should familiarise themselves with these rules and can discuss further with the Greenwich Students' Union Team on individual request.

CANDIDATES MUST

- Always abide by all currently GSU Policy & Values, University Rules & Regulations, Government Guidance, and the Law
- Be
- Be responsible for the conduct of their campaigners during the Election process
- Not infringe a students' right to vote confidentially and freely, or influence students while they are voting
- Not run on a platform with any other candidates. Group Campaigning (slates) are not permitted
- Not utilise resources available to them through paid positions at the Union or the University
- Not use their own electronic devices to obtain votes from others, this is strictly prohibited

ADDITIONAL RULES

- Greenwich Students' Union and University Staff must remain apolitical in all SU elections
- Student Staff, whilst on shift, cannot campaign for themselves or others. As staff members for that time, they are impartial, also an unfair advantage to be paid and be campaigning in our spaces
- In the event of a draw between candidates once the final round of Single Transferrable Voting has taken place, the previous round will be used to determine who is appointed. The candidate with the greatest number of votes in the previous round will be elected. In the case of another draw, each round will be backtracked until a candidate is elected. Ultimately if this cannot be resolved, a coin toss will take place to determine the winner.

FURTHER GUIDANCE

- Please be respectful of others while campaigning, individuals may still abide by social distancing rules or have invisible/visible disabilities that prefer for distancing to take place
- Election materials are permitted on poster boards around campus however not permitted on buildings
- Candidates must not campaign in lectures/online classes without prior permission from the lecturer and it must not cause disruption to teaching activity
- Please email elections@greenwich.ac.uk if you have any queries

GUIDE TO ENDORSING

Endorsing as an Individual

Endorsing as an individual: As a member of Greenwich Students' Union, you can endorse as many candidates as you like. However, each candidate must be endorsed individually, this means a single post encouraging votes to support more than one candidate is prohibited. However, a succession of promotions is okay if the ordering of preferences is not promoted. If in doubt, ask a member of the Greenwich Students' Union team.

Endorsing as a Student Group

Club & Societies are able to endorse 1 candidate per club/society in line with the set out guidance for Club & Society Candidate Endorsement.

SU student staff member

Student Staff Members are able to endorse and campaign for candidates throughout the election period, however, not whilst on shift, wearing staff uniform or using platforms given to you as part of your role. This includes GSU Officers and Student Staff.

ELIGIBILITY

There are certain criteria which members must fulfill before being eligible to run or vote in Greenwich Students' Union Officer Elections. These are outlined below, if you have any questions around eligibility, please contact elections@greenwich.ac.uk

Nominating

To run for a Student Group committee position, candidates must:

- Have full student status for the year 2024/25
- Be a full member of Greenwich Students' Union or Kent Students' Union
- Be a member of the respective student group
- Not be on a placement, year abroad, exchange program or apprenticeship for the elected academic year.

COMPLAINTS

Greenwich Students' Union will strive to deal with complaints informally in the first instance. All complaints must be emailed to elections@greenwich.ac.uk

- Any complaints about candidate conduct should be submitted via email within 24 hours of the alleged incident. The complaint deadline is 3 hours after the election vote closes.
- To appeal any complaint, candidates must do so in writing to the Returning Officer via elections@greenwich.ac.uk. Appeals must be submitted within 24 hours of notification of the complaint, or by the appeals deadline. The appeals deadline is four days after the elections vote closes.
- The Returning Officer and Deputy Returning Officer will decide on the penalty (if any) of any candidate complaint. This can range from a verbal warning to disqualification from election. The Returning Officer is responsible for the final interpretation of these rules and the final decision.
- No candidate may challenge the result of the election once the count has started.
- The Deputy Returning Officer reserves the right to consider complaints that are made maliciously, or to purposefully disrupt a candidates' campaign. The Deputy Returning Officer may take disciplinary action accordingly.

Voting

To vote for a Student Group Committee role, candidates must:

- Have full student status for the year 2023/24
- Be a full member of Greenwich Students' Union or Kent
- Students' Union
- Students must be a registered member of the student group on greenwichsu.co.uk
- Only members of the student group will be able to vote in the elections.

Manifestos

- Your manifesto is a statement which tells people who you are, what you hope to achieve whilst in the role and why people should vote for you.
- It's what people will see when they go online to vote.
- Think about what you can achieve and what other students would respond to well.



Why write a manifesto?

- It helps convince students to vote for you.
- It ties your campaign together with policy.
- It sets students' expectations of what you're hoping to achieve and helps staff support you in your role.

What should I write?

- Introduce yourself. Think about the reasons that you would be good for the position.
- Stick to a few key priorities that you would work on if you were elected. A maximum of 5 would work well.

Manifesto Tips

- Be realistic and tangible:
- When people vote, they think about whether they trust the candidate.
- If your promises are not possible students will know.
- If your manifesto is too vague, students won't have anything to believe in or feel passionate about.
- Your manifesto doesn't need to be elaborately designed.
- Be clear and concise with your platform – telling students exactly why they should vote for you in as few words as possible.
- Balance substance with the need to satisfy attention spans
- A manifesto is not the be end & end all - the most important thing is to speak to more students than the other candidates.

Campaigns

There are a few things you can do to campaign:

- On our website you can upload a manifesto, letting others know why they should vote for you.
- You can also get in touch with your lecturer and see if they would be happy with you speaking in front of the class saying why students should vote next week.
- But the best way is probably to just talk to your friends and others on the course directly and encourage them to vote for you.

Have a think about what you're going to tell students when you talk to them – what would you change? Or are you just going to listen to them?



Why Should I run?

- Ongoing development opportunities throughout the year
- Gain and develop transferable skills
- Networking and building relationships within the University and the Students' Union
- Volunteering hours count towards your Reward and Recognition Scheme
- Gain excellent career – boosting experience to enhance your CV and LinkedIn profile
- Make a difference to your University experience

From us you will get support to make your ideas a reality, through training, campaign support and leadership guidance. You don't need any previous experience, full training and support will be given by GSU.

Other Questions

What support is available?

GSU will support you to make your ideas a reality, through training and leadership guidance.

How can I give feedback?

You can give feedback on the elections process by emailing elections@greenwich.ac.uk

Can I nominate somebody else?

Students can only nominate themselves. But you can suggest someone else and we will drop them an email.

Is this a paid position?

No, the roles in this election are voluntary.

Any other election related questions
email: elections@gre.ac.uk

gsu

ELECTIONS

The
Hub

greenwich
students'
union

**KENT
UNION**
KENTUNION.CO.UK

CHRIST CHURCH
STUDENTS'
UNION



greenwichsu.co.uk/elections