

student leadership elections

✓ Lead the change

Where can I see the full breakdown of results?

You can watch the full count in the Activities Office as soon as all results are over! You can also see all the rounds in the breakdown packs distributed after the final results are announced

Now onto Results!!

What is a Faculty Officer?

Faculty Officers work together as a team of four officers per faculty to make sure that students' academic interests are represented at the faculty level so that all students have a great educational experience at Greenwich.

HEALTH & EDUCATION FACULTY OFFICER



MATHILDA JOHNSON



ANGEL ROSE



R.O.N.

HEALTH & EDUCATION FACULTY OFFICER



MATHILDA JOHNSON

32.6



ANGEL ROSE

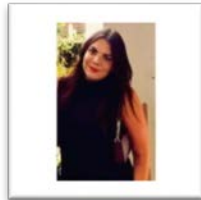
32.6



R.O.N.

0

HEALTH & EDUCATION FACULTY OFFICER



MATHILDA JOHNSON



ANGEL ROSE

ENGINEERING & SCIENCE FACULTY OFFICER



GIORGIO CAPPATO



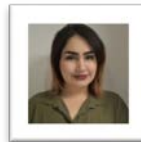
BERNADETTE COZMA



R.O.N.



RHODA EKUNDAYO



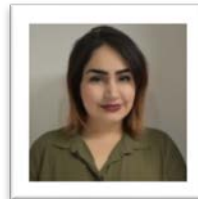
MEHRNOUSH SALMANI

ENGINEERING & SCIENCE FACULTY OFFICER



BERNADETTE COZMA

22.4



MEHRNOUSH SALMANI

22



R.O.N.

5



GIORGIO CAPPATO

12



RHODA EKUNDAYO

12

ENGINEERING & SCIENCE FACULTY OFFICER



BERNADETTE COZMA



MEHRNOUSH SALMANI



GIORGIO CAPPATO



RHODA EKUNDAYO

ACH FACULTY OFFICER



SILVIJA BARTKUTE



ZOE CAMPBELL



ZARIN KAMALI



EMMANUEL BLESSING



FREYA CARY



ENA SOFTIC



RYAN BRYCE



BETHANY HOWELL



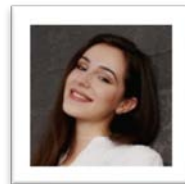
R.O.N.

ACH FACULTY OFFICER



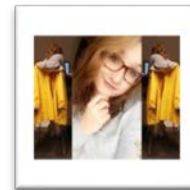
ZOE CAMPBELL

62



ENA SOFTIC

55



FREYA CARY

54



BETHANY HOWELL

54



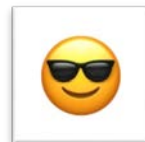
SILVIJA BARTKUTE

47



RYAN BRYCE

38



R.O.N.

9



ZARIN KAMALI

8



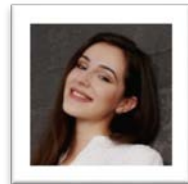
EMMANUEL BLESSING

5

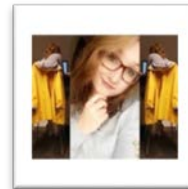
ACH FACULTY OFFICER



ZOE CAMPBELL



ENA SOFTIC



FREYA CARY



BETHANY HOWELL

BUSINESS FACULTY OFFICER



HIMAVANTH HASAGANUR JAYANTH



BIANCA STOICA



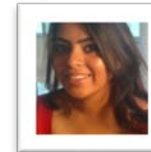
WILL CLARKE



ANTONELA CHIRILOV



ABHAY SINGH



SHAKAMBHAREE GAUR



LAURA PLA RAMIREZ



SIYANA YANKOVA



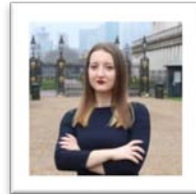
R.O.N.

BUSINESS FACULTY OFFICER



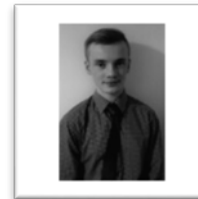
HIMAVANTH HASAGANUR JAYANTH

60



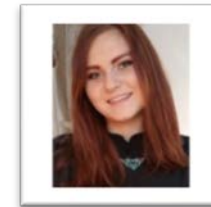
BIANCA STOICA

48



WILL CLARKE

46



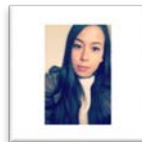
ANTONELA CHIRILOV

45



SHAKAMBHAREE GAUR

45



LAURA PLA RAMIREZ

38



ABHAY SINGH

20



SIYANA YANKOVA

5



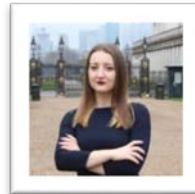
R.O.N.

5

BUSINESS FACULTY OFFICER



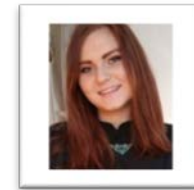
HIMAVANTH HASAGANUR JAYANTH



BIANCA STOICA



WILL CLARKE



ANTONELA CHIRILOV

Part-time Officers

Each of the Part-time Officers is responsible for a specific portfolio. They work closely with Sabbatical Officers, play a leading role in running the campaigns and assume an active role in promoting the Union and its values.

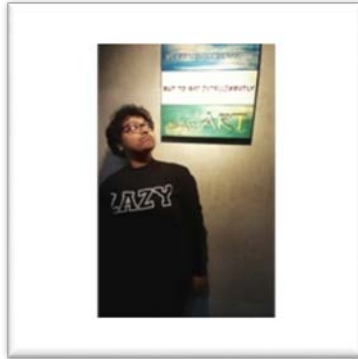
INTERNATIONAL STUDENTS' OFFICER

Represent International students' views and opinions throughout the whole of the Students' Union's work. Students come from far and wide to attend the university, so this officer is responsible for representing this unique and diverse students views.

INTERNATIONAL STUDENTS' OFFICER



MARIA PAULA
AVENDANO HURTADO



TISHA BANIK



YOSMHARA FUENTES



ABDULRAHMAN GARBA



BILAL IJAZ



CAITLIN MCDONALD



ZAID FAZAL MUKADAM



DANISH SRANKINTAKATH



R.O.N.

INTERNATIONAL STUDENTS' OFFICER



BILAL IJAZ

61



DANISH SRANKINTAKATH

40



YOSMHARA FUENTES

28



TISHA BANIK

20



ZAID FAZAL MUKADAM

19



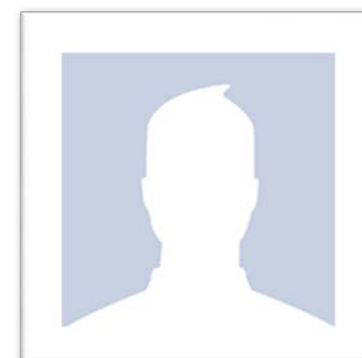
R.O.N.

6



CAITLIN MCDONALD

2



MARIA PAULA
AVENDANO HURTADO

0



ABDULRAHMAN GARBA

0

INTERNATIONAL STUDENTS' OFFICER



BILAL IJAZ

WOMEN STUDENTS' OFFICER

Represent Women students' views and opinions throughout the whole of the Students' Union's work. This role should challenge the University's inclusion and provision for Women students.

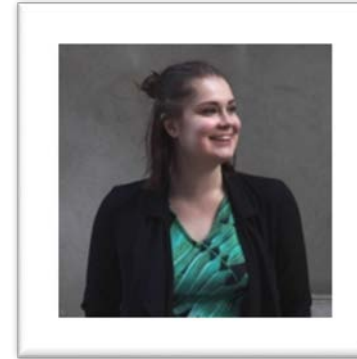
WOMEN STUDENTS' OFFICER



HANNAH ADAMS



ABIGAIL CAMPBELL



NATHALIE GRIGORENKO



KAUTHER HUSSAN



SABIHA SULAIMAN



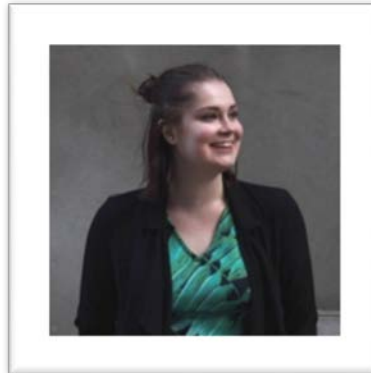
R.O.N.

WOMEN STUDENTS' OFFICER



HANNAH ADAMS

373



NATHALIE GRIGORENKO

244



R.O.N.

31



SABIHA SULAIMAN

29



ABIGAIL CAMPBELL

17



KAUTHER HUSSAN

11

WOMEN STUDENTS' OFFICER



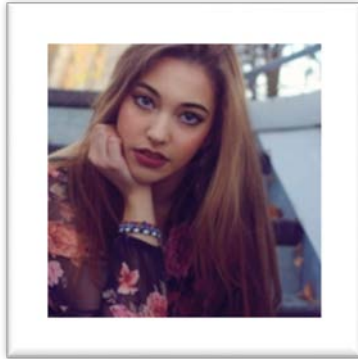
HANNAH ADAMS

BAME STUDENTS' OFFICER

Represent BAME (Black And Minority Ethnic) students' views and opinions throughout the whole of the Students' Union's work.

This role should challenge the University's inclusion and provision for BAME Students. They will also work on the provision of BAME focused events at Welcome Week after a Student Council motion has been passed on this topic.

BAME STUDENTS' OFFICER



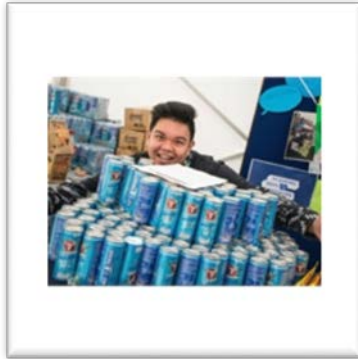
YASMIN BENNAIM KUSKA



WAJIHA CHOUDHRY



BARAKAT A. JUNAID



RYAN NAVARRO



VENU GOPAL RATHI



R.O.N.

BAME STUDENTS' OFFICER



YASMIN BENNAIM KUSKA

323



RYAN NAVARRO

258



WAJIHA CHOUDHRY

58



R.O.N.

28



VENU GOPAL RATHI

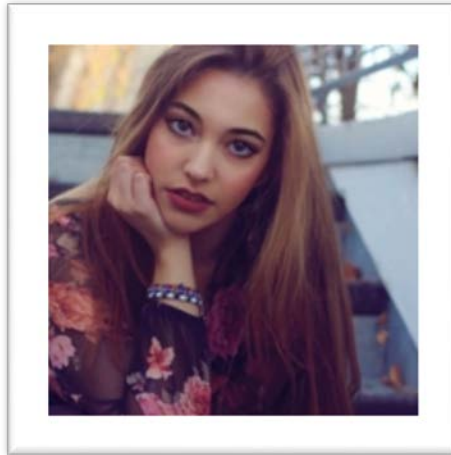
22



BARAKAT A. JUNAID

15

BAME STUDENTS' OFFICER



YASMIN BENNAIM KUSKA

GREENWICH CAMPUS OFFICER

Represent Greenwich Campus students' views and opinions throughout the whole of the Students' Union's work, while challenging the University to provide better services for this campus.

GREENWICH CAMPUS OFFICER



JOHN EDWARDS



MATTHEW KIFF



YASMINE MCNAMARA



MICHELA RESTA



R.O.N.

GREENWICH CAMPUS OFFICER



YASMINE MCNAMARA

260



MICHELA RESTA

247



MATTHEW KIFF

166



JOHN EDWARDS

88



R.O.N.

15

GREENWICH CAMPUS OFFICER



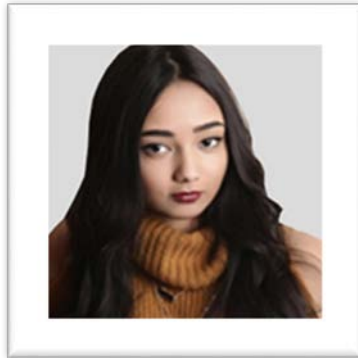
YASMINE MCNAMARA

POSTGRADUATE & PART-TIME STUDENTS' OFFICER

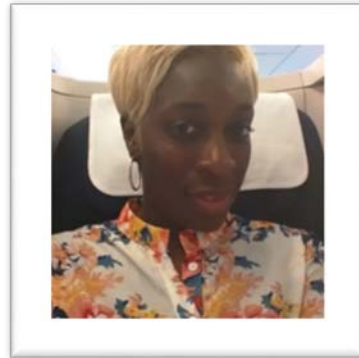
Represent Postgraduate and Part-time students' views and opinions throughout the whole of the Students' Union's work.

Represent the diverse needs of postgraduate taught, postgraduate research and part-time students to make sure the university creates a supportive environment for these students.

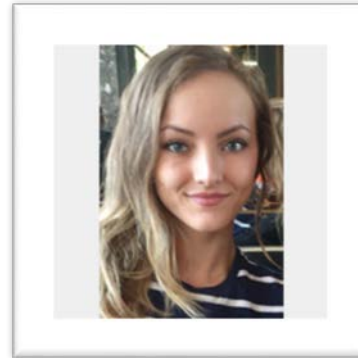
POSTGRADUATE & PART-TIME STUDENTS' OFFICER



SONIA RICHARD



SHANNA LINTON



TARA BRANDT

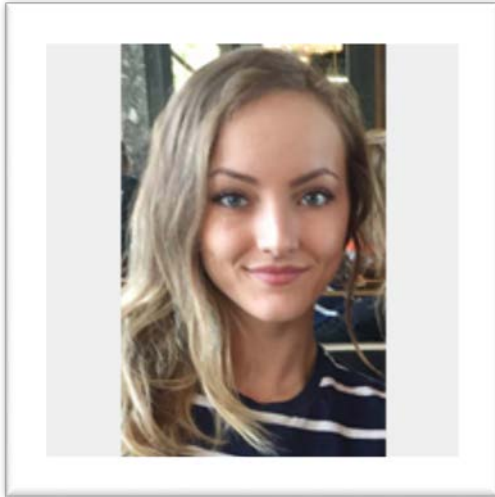


USMAN AHMAD



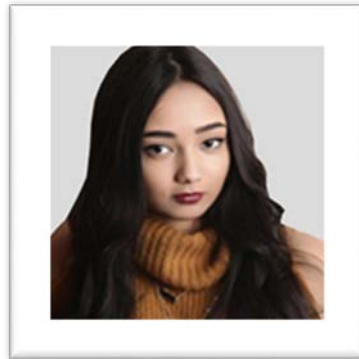
R.O.N.

POSTGRADUATE & PART-TIME STUDENTS' OFFICER



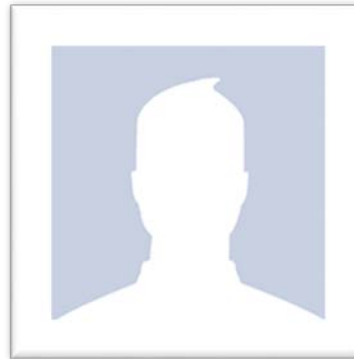
TARA BRANDT

46



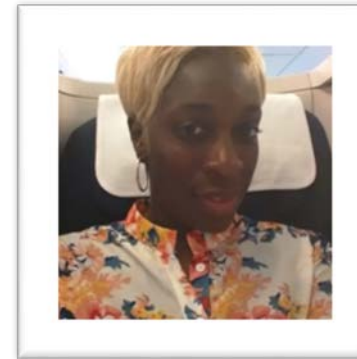
SONIA RICHARD

30



USMAN AHMAD

7



SHANNA LINTON

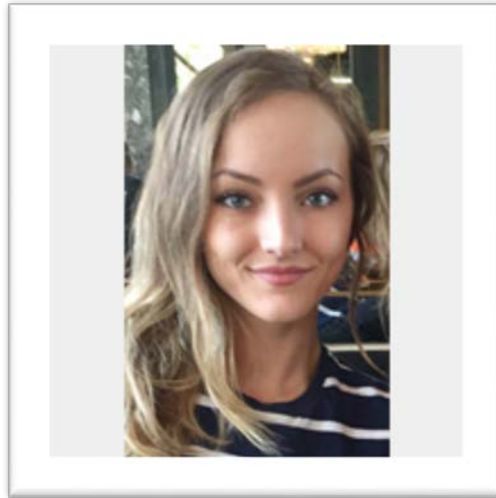
6



R.O.N.

0

POSTGRADUATE & PART-TIME STUDENTS' OFFICER

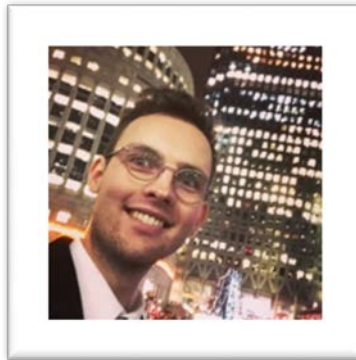


TARA BRANDT

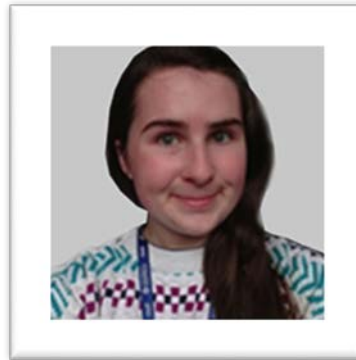
DISABLED STUDENTS' OFFICER

Represent Disabled students' views and opinions throughout the whole of the Students' Union's work. This role should challenge the University's inclusion and provision for Disabled students.

DISABLED STUDENTS' OFFICER



BRADLEY CORY



ABI DAVIS



AIRTON SILVES FERREIRA VAZ



R.O.N.

DISABLED STUDENTS' OFFICER



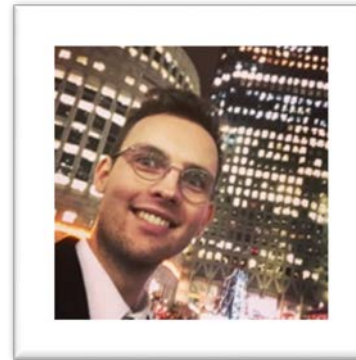
ABI DAVIS

316



AIRTON SILVES FERREIRA VAZ

139



BRADLEY CORY

130



R.O.N.

14

DISABLED STUDENTS' OFFICER



ABI DAVIS

AVERY HILL CAMPUS OFFICER

Represent Avery Hill students' views and opinions throughout the whole of the Students' Union's work, while challenging the University to provide better services for this campus.

AVERY HILL CAMPUS OFFICER



EMMANUEL DOMINIC



KIRAN KHAN

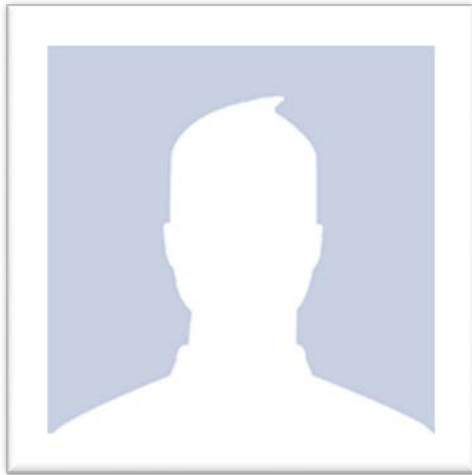


CHANELLE MCFARLANE



R.O.N.

AVERY HILL CAMPUS OFFICER



KIRAN KHAN

112



CHANELLE MCFARLANE

52



R.O.N.

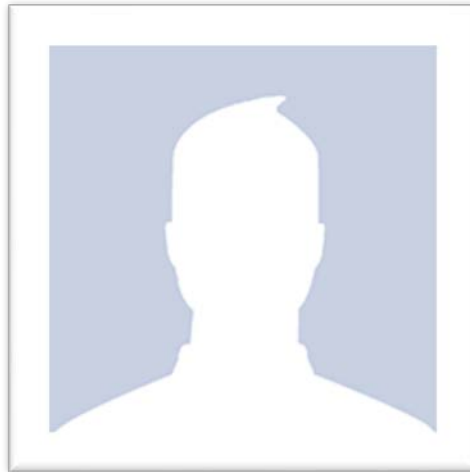
41



EMMANUEL DOMINIC

32

AVERY HILL CAMPUS OFFICER



KIRAN KHAN

VOLUNTEERING & COMMUNITY OFFICER

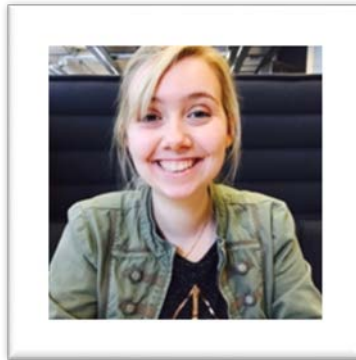
Promote volunteering and community outreach throughout the whole of the Students' Union's work and activities.

Bring the community into the Greenwich Student population and take Greenwich students into the community.

VOLUNTEERING & COMMUNITY OFFICER



LOUISE COULTER



SANJA DUDEK



VAISHNEVI SUNJJOY PAATIL



R.O.N.

VOLUNTEERING & COMMUNITY OFFICER



SANJA DUDEK

283



LOUISE COULTER

232



VAISHNEVI SUNJJOY PAATIL

72



R.O.N.

23

VOLUNTEERING & COMMUNITY OFFICER



SANJA DUDEK

MEDWAY CAMPUS OFFICER

Represent Medway students' views and opinions throughout the whole of the Students' Union's work, while challenging the University to provide better services for this campus.

MEDWAY CAMPUS OFFICER



ATCHANA GANESALINGAM



SHONTE MILLER-HOWE



R.O.N.

MEDWAY CAMPUS OFFICER



ATCHANA GANESALINGAM

74



SHONTE MILLER-HOWE

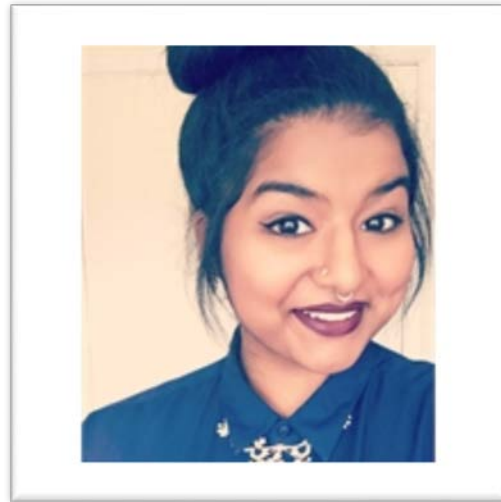
10



R.O.N.

9

MEDWAY CAMPUS OFFICER



ATCHANA GANESALINGAM

LGBTQ+ STUDENTS' OFFICER

Represent LGBTQ+ (Lesbian, Gay, Bisexual, Transgender, Queer +) students' views and opinions throughout the whole of the Students' Union's work. This role should challenge the University's inclusion and provision for LGBTQ+ students.

LGBTQ+ STUDENTS' OFFICER



NADIR AL-KABRA



ANTHONY JACK WILLIAMS



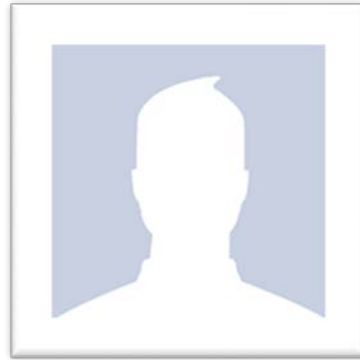
R.O.N.

LGBTQ+ STUDENTS' OFFICER



ANTHONY JACK WILLIAMS

454



NADIR AL-KABRA

103



R.O.N.

44

LGBTQ+ STUDENTS' OFFICER



ANTHONY JACK WILLIAMS

MATURE STUDENTS' OFFICER

Represent Mature students' views and opinions throughout the whole of the Students' Union's work. This role should challenge the University's inclusion and provision for Mature students.

MATURE STUDENTS' OFFICER

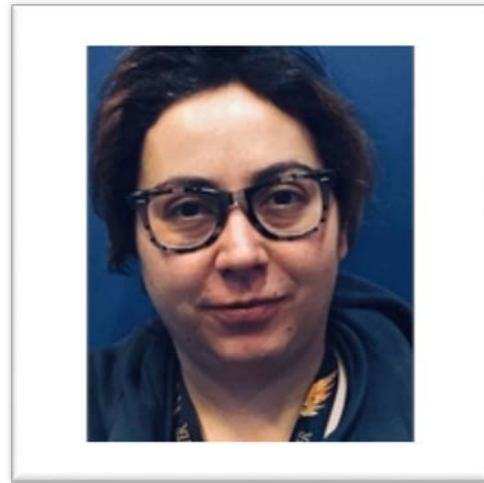


ALESSIA SERAFINI



R.O.N.

MATURE STUDENTS' OFFICER



ALESSIA SERAFINI

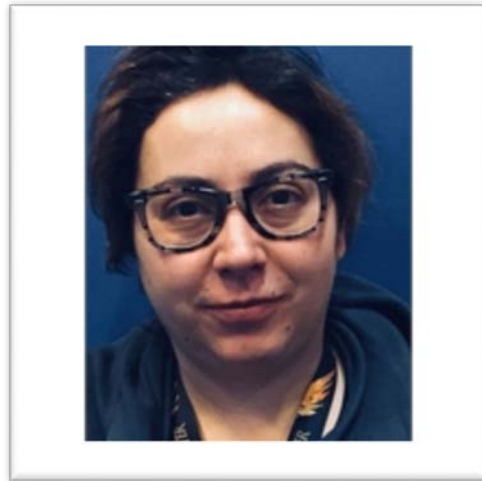
149



R.O.N.

13

MATURE STUDENTS' OFFICER



ALESSIA SERAFINI

Have a short break
and come back in 10
minutes for the full time
officer results!

Could all elected part time officers
please come to the front for a photo!

How will we announce Full Time Officer Results?

For Full Time Officer Results, we will show you:

- all candidates
- the candidates who didn't make it to the final round
- the top two candidates in the final round
- the winner

For example:

PRESIDENT



LEONARD HOFSTADTER



HOWARD WOLOWITZ



SHELDON COOPER



RAJESH KOOTHRAPPALI



R.O.N.

PRESIDENT

After X Rounds, the candidates that didn't make it to the final two are...



HOWARD WOLOWITZ

280



RAJESH KOOTHRAPPALI

10



R.O.N.

2

PRESIDENT

950

320

And the winner is...

PRESIDENT



SHELDON COOPER

950



LEONARD HOFSTADTER

320

PRESIDENT



SHELDON COOPER

Where can I see the full breakdown of results?

You can watch the full count in the Activities Office as soon as all results are over!

You can also see all the rounds in the breakdown packs distributed after the final results are announced

Now onto Results!!

VP WELFARE

This VP leads on developing resources and campaigns for the welfare and wellbeing of the student body. They work on everything from helping you with your finances to making sure that the Students' Union represents and celebrates all liberation groups.

VP WELFARE



MOHAMMED MOOSA ALI



HENRY SETTER



R.O.N.

VP WELFARE

After 1 Round, the candidates that didn't make it to the final two are...



R.O.N.

41

VP WELFARE

853

146

And the winner is...

VP WELFARE



HENRY SETTER

853



MOHAMMED MOOSA ALI

146

VP WELFARE



HENRY SETTER

VP EDUCATION

This VP leads on making sure your academic interests are represented and you get the best out of your course and overall experience at university.

VP EDUCATION



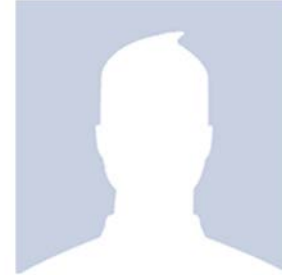
ADIYA AIMANOVA



AGNES ASHUN



MANDY FARRIES



DIANA IRIMIA



DAVID JENKIN



ALESSIO PAPA



EMMA PORTER



R.O.N.

VP EDUCATION



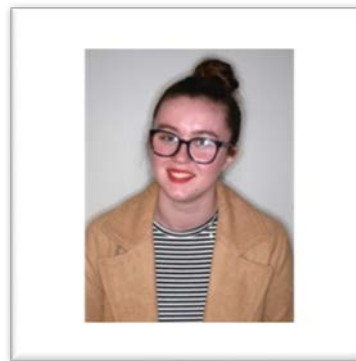
DAVID JENKIN

235



AGNES ASHUN

192



EMMA PORTER

165



MANDY FARRIES

89



R.O.N.

16



DIANA IRIMIA

10

VP EDUCATION

507

289

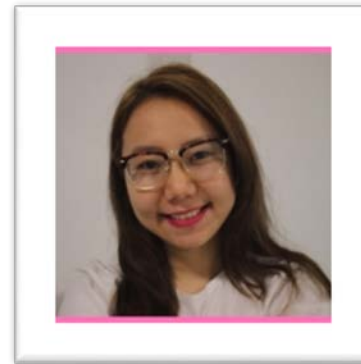
And the winner is...

VP EDUCATION



ALESSIO PAPA

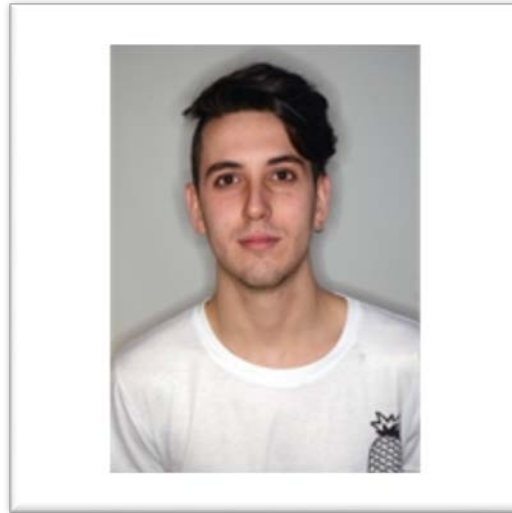
507



ADIYA AIMANOVA

289

VP EDUCATION



ALESSIO PAPA

VP STUDENT ACTIVITIES

This VP focuses on everything outside the classroom from making sure you have accessible activities to staying healthy and having a great social life.

VP STUDENT ACTIVITIES



AHMED BARRY



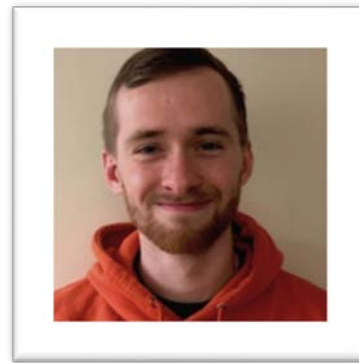
JACK BRAY



LINA KAMERGI



JONO SMITH



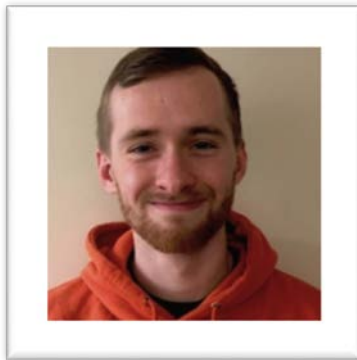
MARK TOOHER-WRIGHT



R.O.N.

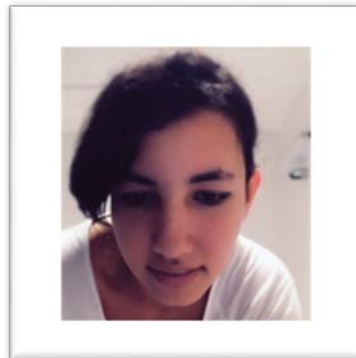
VP STUDENT ACTIVITIES

After 5 Rounds, the candidates that didn't make it to the final two are...



MARK TOOHER-WRIGHT

164



LINA KAMERGI

129



AHMED BARRY

40



R.O.N.

19

VP STUDENT ACTIVITIES

456

335

And the winner is...

VP STUDENT ACTIVITIES



JONO SMITH

456



JACK BRAY

335

VP STUDENT ACTIVITIES



JONO SMITH

PRESIDENT

The President of the Students' Union is the figurehead for the organisation and the first point of contact for many external organisations.

The President's role is to coordinate the activities of the Full-Time Officer team.

The President sits on the governing board of the University, so that there is a student voice who represents you at the highest level.

PRESIDENT



ANAGHA RAJENDRA
ABHONKAR



DRAGAN BOGZARU



MEIKE IMBERG



RAMIDU PERERA



R.O.N.

PRESIDENT

After 1 round, the candidates that didn't make it to the final two are...



RAMIDU PERERA

38



R.O.N.

37



ANAGHA RAJENDRA
ABHONKAR

31

PRESIDENT

792

496

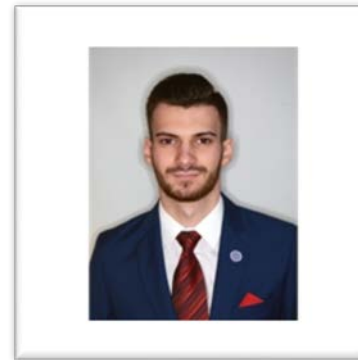
And the winner is...

PRESIDENT



MEIKE IMBERG

792



DRAGAN BOGZARU

496

PRESIDENT



MEIKE IMBERG

We will shortly be hosting a
count for those who wish to
watch in the Activities
Meeting Room

Could all elected officers please
come to the front for a photo!

Congratulations everyone!!