

AUTUMN 2023 ELECTIONS KEY INFO



GENERAL INFORMATION

What are the GSU Elections?

GSU is student led. That is at the heart of everything we do. We are also a democratic organisation. Therefore throughout the year we run elections so students become our future leaders.

We run elections through the year for our volunteers and leaders. Elections are currently open for Programme Representatives, School Networking Officers and NUS Delegates.

From December to February we will be running elections for our Officer roles and in March we will run elections for our Student Group Leaders.

During your time at University, GSU is here to ensure that you have the opportunity and space to have your feedback heard and acted upon, alongside having the chance to represent your own views alongside the views of your peers.

Key Election Dates

Nominations:

Monday 4th September, 12pm -
Sunday 8th October, 12pm

Voting:

Monday 9th October, 12pm -
Thursday 12th October, 12pm

Main Election Page:

greenwichsu.co.uk/elections



How To Nominate

Nomination means putting yourself forward or standing for a role.

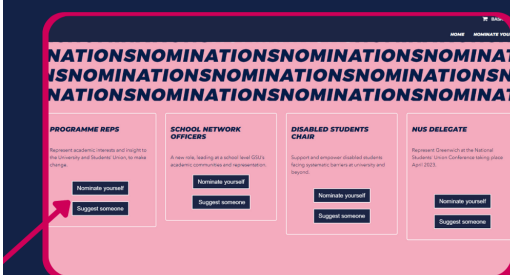
Step 1.

Visit our website
greenwichsu.co.uk
/elections



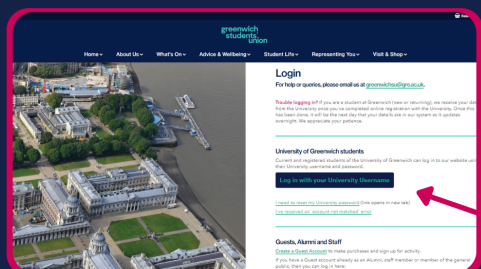
Step 2.

Click on the role you want
to nominate yourself for



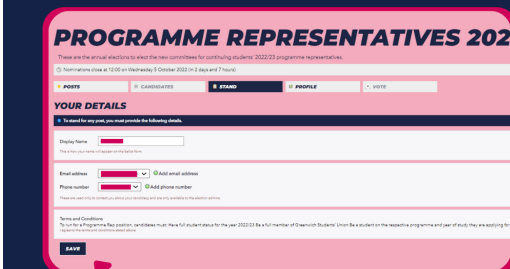
Step 3.

Login with your University
details



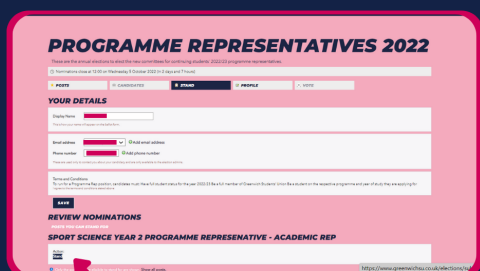
Step 4.

Make sure your details are
correct & Click 'Save' at
the bottom of the page



Step 5.

Click 'Stand' and Submit
Nomination



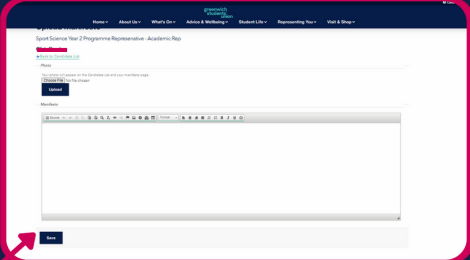
Step 6.

Click 'Stand' and Submit
Nomination



How To Nominate

Step 7.
Optional* Upload a manifesto saying why others should vote for you



Step 8.
WELL DONE YOU HAVE NOMINATED!
Nominations will be approved on Friday 7th

REVIEW NOMINATIONS

You are standing for 1 position.

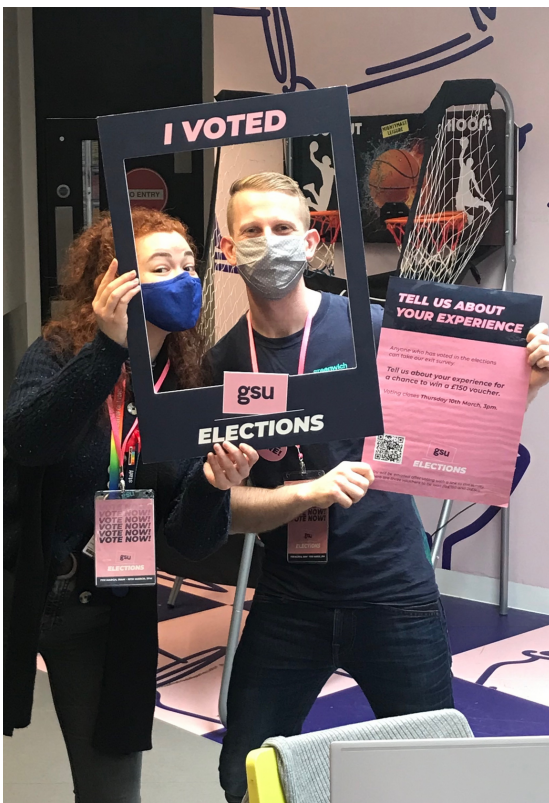
SPORT SCIENCE YEAR 2 PROGRAMME REPRESENTATIVE - ACADEMIC REP

Status:
Your nomination is pending approval.

Manifesto:
Upload

How To Vote

After you have nominated, you will need to be voted into the role.



Once voting is open you need to head to the Elections website at greenwichsu.co.uk/elections and click VOTE.

If you are running in the election you can vote for yourself.

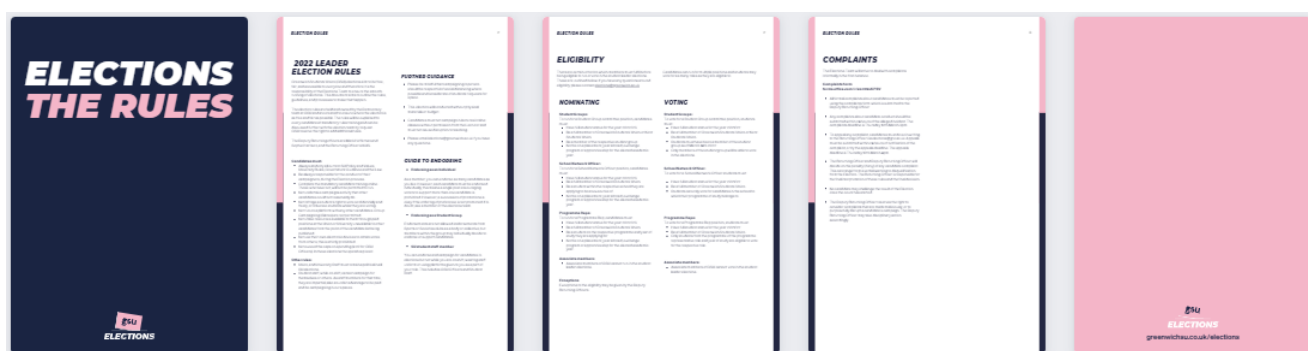
Get as many of your mates, course mates and others to vote for you before the voting period closes.

GSU runs elections via Single Transferable Vote. This means voters will be able to rank candidates in order of preference. So when campaigning remember to tell people to vote you as their number 1 choice.

Election Rules

Greenwich Students' Union (GSU) elections aim to be free, fair, and accessible to everyone and therefore it is the responsibility of the Elections Team to ensure the smooth running of elections. You can find the full rules for the election at www.greenwichsu.co.uk/pageassets/elections/Autumn-Election-Rules.pdf

This document aims to outline the rules, guidelines, and processes to make that happen.



The election rules are held and owned by the Democracy team at GSU and are created to ensure where the election is as free and fair as possible.

The rules can be discussed further with the election team by request. GSU reserve the right to add additional rules throughout the election.

Campaigns

There are a few things you can do to campaign:

- On our website you can upload a manifesto, letting others know why they should vote for you.
- You can also get in touch with your lecturer and see if they would be happy with you speaking in front of the class saying why students should vote next week.
- But the best way is probably to just talk to your friends and others on the course directly and encourage them to vote for you.

Have a think about what you're going to tell students when you talk to them – what would you change? Or are you just going to listen to them?



Manifestos

- Your manifesto is a statement which tells people who you are, what you hope to achieve whilst in the role and why people should vote for you.
- It's what people will see when they go online to vote.
- Think about what you can achieve and what other students would respond to well.



Why write a manifesto?

- It helps convince students to vote for you.
- It ties your campaign together with policy.
- It sets students' expectations of what you're hoping to achieve and helps staff support you in your role.

What should I write?

- Introduce yourself. Think about the reasons that you would be good for the position.
- Stick to a few key priorities that you would work on if you were elected. A maximum of 5 would work well.

Manifesto Tips

- Be realistic and tangible:
- When people vote, they think about whether they trust the candidate.
- If your promises are not possible students will know.
- If your manifesto is too vague, students won't have anything to believe in or feel passionate about.
- Your manifesto doesn't need to be elaborately designed.
- Be clear and concise with your platform – telling students exactly why they should vote for you in as few words as possible.
- Balance substance with the need to satisfy attention spans
- A manifesto is not the be end & end all - the most important thing is to speak to more students than the other candidates.

WHY SHOULD I RUN?

"I decided to become a programme rep because Programme Reps are the key to making sure that the faculty is constantly listening to, and responding to, student feedback. It also allows you to make you new friends and develop professional skills." - Mansiba Zala, BSc Psychology



"I encourage you to run as a rep, be the voice for your colleagues, and represent their views on academic and experience-related issues to provide the University with valuable feedback when planning for the future." - Gloria Badejo, Year 3 Adult Nursing Degree



"I had the opportunity to attend the NUS National Conference. It was a great opportunity to represent Greenwich students at a national level and an excellent opportunity to speak to Delegates and leaders from across the UK. I would encourage anyone interested in shaping the future of higher education to stand as an NUS delegate." - Javed, GSU President (2022-23)

WHY SHOULD I RUN?

- Ongoing development opportunities throughout the year
- Gain and develop transferable skills
- Networking and building relationships within the University and the Students' Union
- Volunteering hours count towards your Reward and Recognition Scheme
- Gain excellent career – boosting experience to enhance your CV and LinkedIn profile
- Make a difference to your University experience

From us you will get support to make your ideas a reality, through training, campaign support and leadership guidance. You don't need any previous experience, full training and support will be given by GSU.

OTHER QUESTIONS

What support is available?

GSU will support you to make your ideas a reality, through training, campaign support and leadership guidance.

How can I give feedback?

You can give feedback on the elections process at
<https://forms.office.com/r/rUJGdBRZ4N>

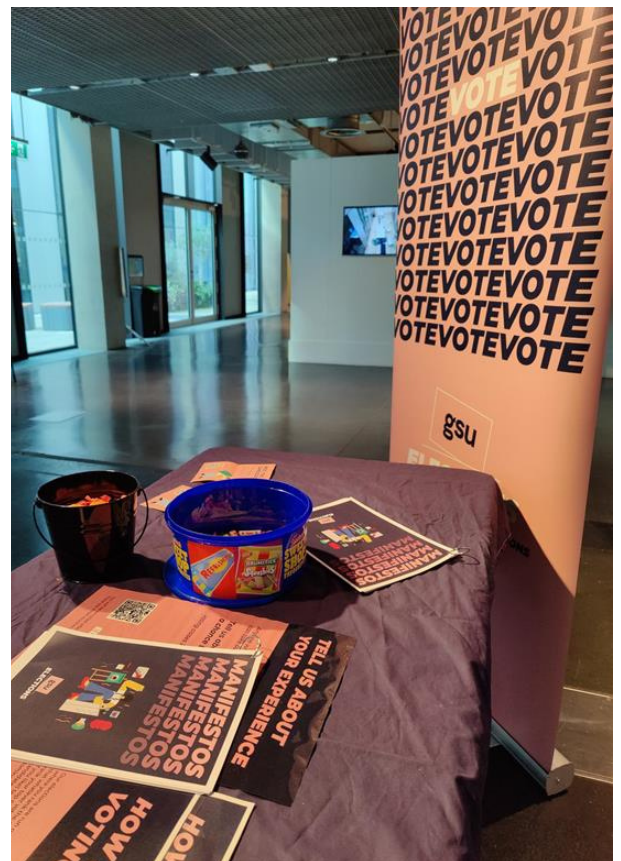
Can I nominate somebody else?

Students can only nominate themselves. But you can suggest someone else and we will drop them an email.
<https://forms.office.com/r/4uQL3WtN4Z>

Is this a paid position?

No, the roles in this election are voluntary.

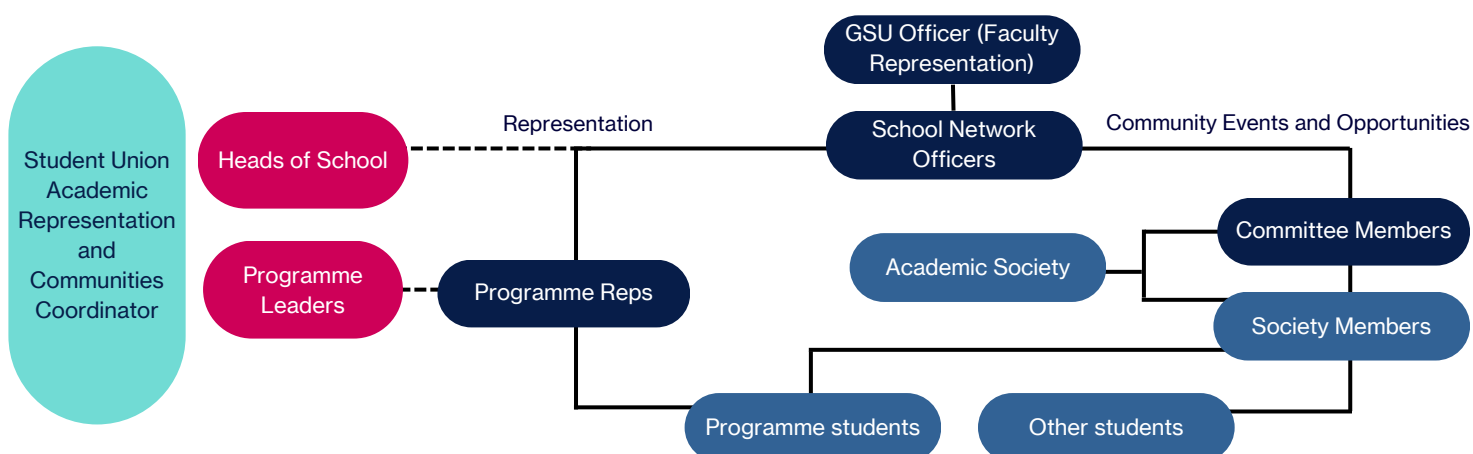
Any election related questions email:
elections@gre.ac.uk



There are 2 Programme Representatives (Reps) per year for every programme. Reps are elected students who represent you and your views on academic matters relating to your course. They act as the link between students and the academic staff on each course, ensuring the student voice is being heard and positive changes are being made in every department. Reps are the first port of call for any suggestions, comments, or queries about the academic experience.

You will be working with the School Networking Officer (SNO) for your school to ensure that feedback is heard at a school level and your SNO knows any patterns across your school.

As a Rep you will represent your peers/fellow students about issues, concerns and good practices related to your programme as well as sharing issues with fellow Reps, peers, SNOs, staff and GSU. You will be invited to attend all key decision making meetings such as Programme Committee meetings where you can help to make a change, and feedback information to your peers.



NUS DELEGATE

Being an NUS Delegate is an amazing opportunity to shape these changes, represent Greenwich on the national stage and meet students from across the country. There are seven roles elected from all students across campuses.

Delegates will attend the NUS Conference on behalf of GSU. These conferences give students from across the country the chance to steer the work of NUS representing over 7 million students across the United Kingdom, making changes which improve the lives of students nationwide. At the conference you will vote on priority campaigns, elect NUS leadership and meet lots of other students. The conference is usually in April and will be for 2024.

We will train you on what to expect from the conference and you will be eligible to stand for positions at NUS e.g., national scrutiny council.

Requirements: The NUS elections are gender-balanced and thus GSU cannot send seven students with a majority of students identifying as male. Due to policy passed in 2020 at the student assembly, the GSU President automatically gets a NUS Delegate position.



LIBERATION CHAIR

As an elected Liberation Chair, you are GSU's representative for all students who self identify as apart of that liberation group across our campuses. You'll be involved in running campaigns to raise awareness for the issues facing students and advocating to change what is not working, with the support of GSU staff and students.

The groups we are electing chairs for are Women, LGBTQ+, Disabled Students, Students of Colour, Commuter Students and Mature Students

You'll be involved in shaping our History Month programmes, and guiding GSU on how it supports students.

You will also be invited to attend the Liberation Conference with NUS.



ELECTIONS

**greenwich
students'
union**

greenwichsu.co.uk/elections